



4/18 Blandford Avenue Bronte NSW

2  **1** 

In the grand old 'Palmerston House' a converted Victorian era mansion, this two bedroom apartment retains every inch of its original charm. Tranquil and private, it lies within an easy stroll of Tamarama and Bronte Beach, waterside cafés and coastal walks and positioned directly opposite a park.

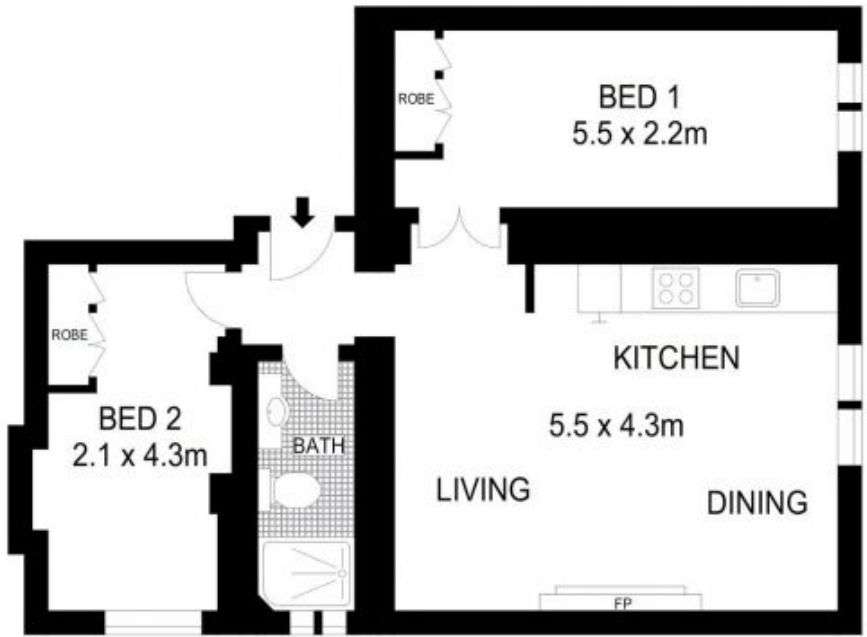
- Majestic high ceilings, timber floors, cast iron fireplace
- Sandstone feature walls
- Open plan lounge and dining
- CaesarStone kitchen featuring stainless steel gas appliances
- Two bedrooms, both fitted with timber built-in wardrobes
- Original bathroom with combined bathtub and shower
- Internal laundry facilities, common lawns and gardens

Type : Apartment
Building Size : 68 sqm
View : <https://www.cjhills.com.au/sale/nsw/eastern-suburbs/bronte/residential/apartments/6181538>



Colin Hills
02 9918 3864

[For full version visit the website](https://www.cjhills.com.au)



GROUND FLOOR



Scale in metres. Indicative only. Dimensions are approximate. All information contained herein is gathered from sources we believe to be reliable. However we cannot guarantee its accuracy and interested persons should rely on their own enquiries.



4/18 Blandford Avenue, Bronte

