






9 Parkland Road Mona Vale NSW

4  3  2 

Set on 721 sqm and elevated to admire the stunning outlook over Bayview Golf Course, this impressive tri-level family home offers an idyllic contemporary lifestyle without compromise. Radiating style and practicality, the property exudes a sophisticated coastal ambience.

Price : \$ 1,700,000
Land Size : 721 sqm
View : <https://www.cjhills.com.au/sale/nsw/northern-beaches/mona-vale/residential/house/6181629>

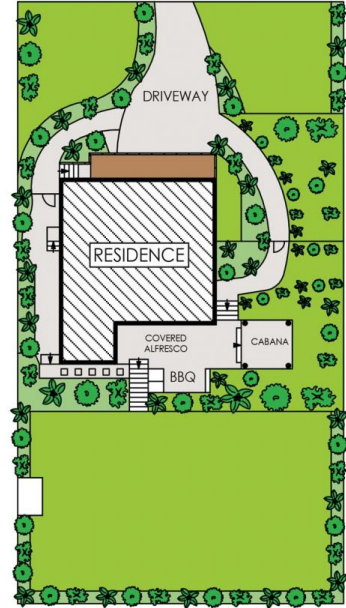
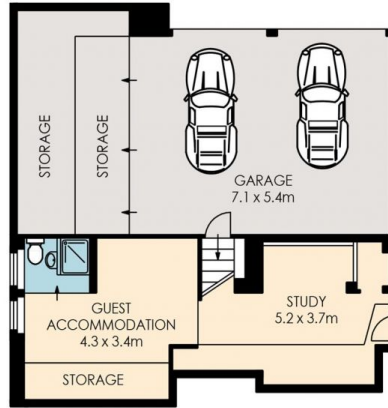
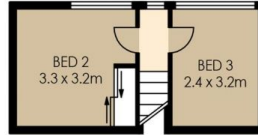
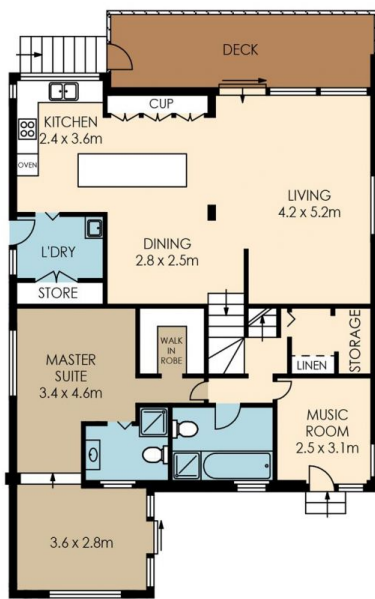
Showcasing:

- Stunning open plan living / dining / kitchen flowing seamlessly to front sunlit veranda
- Large gourmet CaesarStone/Bosch kitchen with sleek island bench
- Superb master suite with walk in robe, en-suite and direct access to rear terrace
- Guest accommodation, versatile workshop / studio with en-suite
- Chic bathrooms
- Internal laundry room with separate access to yard



Colin Hills
02 9918 3864

9 Parkland Road, Mona Vale



Plans are for presentation purposes only and are not part of any legal document or title and should not be used as a sole reference. Interested parties should make their own enquires using other sources. Measurements are approximates. We do not guarantee or give any warranty as to the accuracy provided. Interested parties must rely on their own enquiries.