

**31 Mckell Street Birchgrove NSW**

4  2  2 

Please register for the open by 5pm Friday. Thanks

Located opposite beautiful Mort Bay Park, this sophisticated designer home is wrapped in a landscaped North East courtyard. Spanning three stylish levels and incorporating a master suite, it offers a relaxed harbourside lifestyle together with double parking.

- Chic stone-tiled entry hall, seamless indoor/outdoor living
- 4 double beds, 2 with built-ins, 2 stylish designer baths
- Master with an ensuite and deck
- Spacious living and dining areas with dark timber floors
- Custom-designed entertainer's CaesarStone gas kitchen
- Deck, sunny courtyard, private garden
- Internal laundry, zoned air

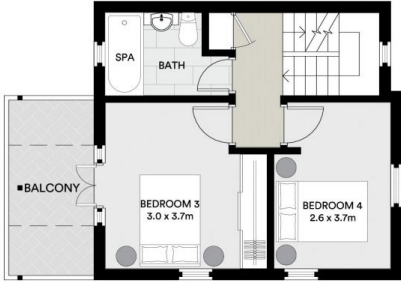
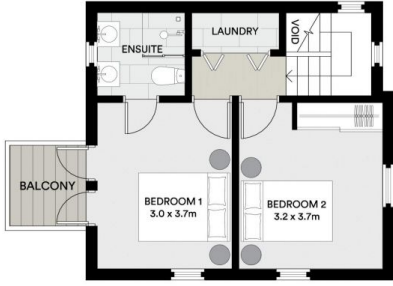
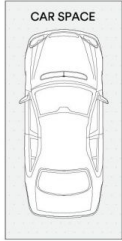
**Type** : Townhouse

**View** : <https://www.cjhills.com.au/sale/nsw/inner-west/birchgrove/residential/townhouse/7537204>



**Colin Hills**  
**02 9918 3864**

[For full version visit the website](https://www.cjhills.com.au)



All information contained in this document is from sources we believe to be accurate, however we cannot guarantee its accuracy. Interested persons should make and rely on their own enquiries in relation to measurements, dimensions, layout, furniture and descriptions.